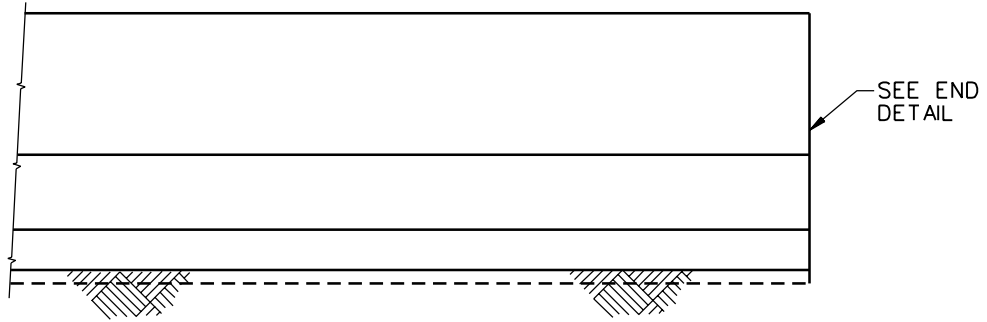
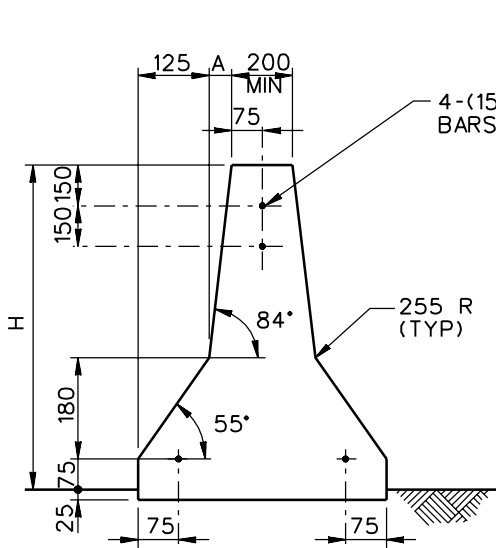


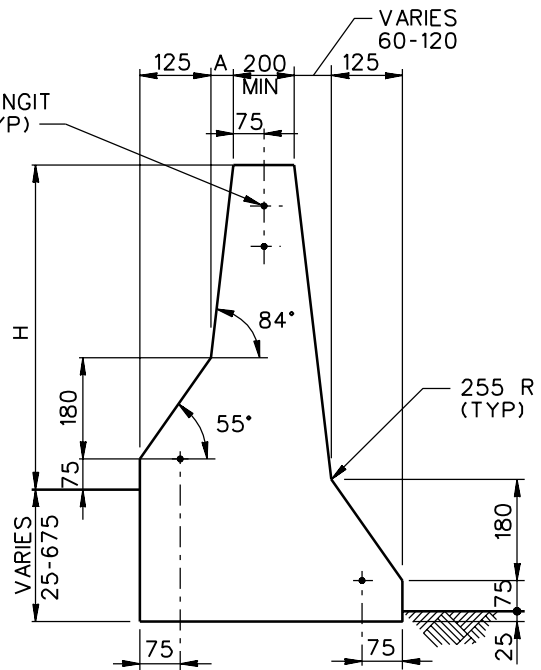
- NOTES:**
1. ALL EDGES SHALL BE ROUNDED WITH A 24 R EXCEPT AS SHOWN.
 2. THE BARRIER SHALL BE ANCHORED AT THE ENDS OR AT INTERRUPTIONS WITH EITHER A DOWELED-IN CONNECTION OR A 255 DEEP MONOLITHIC FOOTING.



ELEVATION



SECTION



SECTION

SYSTEM	A	H
SGM10a	60	810
SGM10b	85	1070

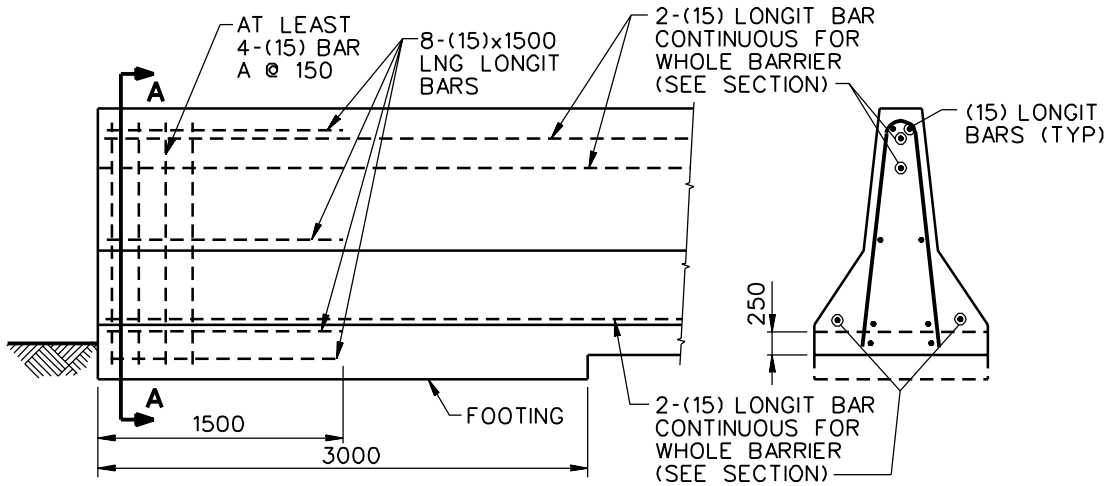
1994

F-SHAPE MEDIAN BARRIER

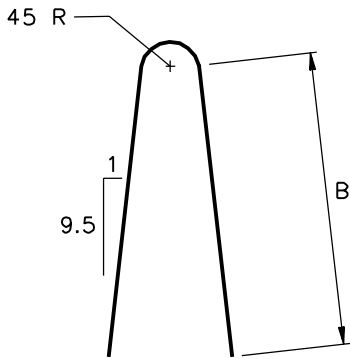
SGM10a-b

SHEET NO.	REF. NO.
1 of 4	MB5-F

60000. A LENGTH OF 6000 IS THE MOST COMMON.
2. BARRIER MAY BE MONOLITHIC WITH FOOTING OR IT MAY BE CONNECTED WITH 10 (25) REBAR DOWELS SET 2 IN LINE AT 610.
 3. USE MINIMUM COVER OF 40.



ANCHORAGE DETAIL



BAR A (15)

SYSTEM	B
SGM10a	970
SGM10b	1250

1994

F-SHAPE MEDIAN BARRIER

SGM10a-b

SHEET NO.	REF. NO.
3 of 4	MB5-F