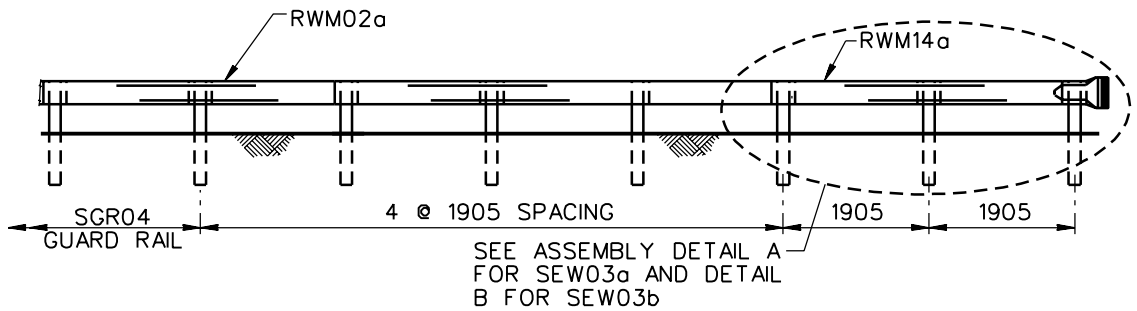
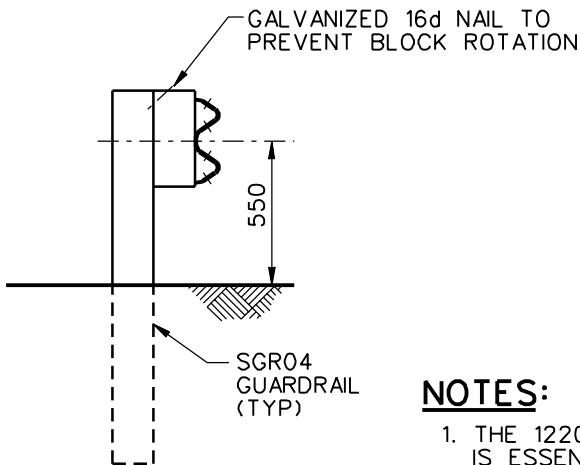


PLAN



ELEVATION



SECTION A-A

POST	OFFSET FROM TANGENT
1	1220
2	850
3	550
4	310
5	140
6	35
7	0

NOTES:

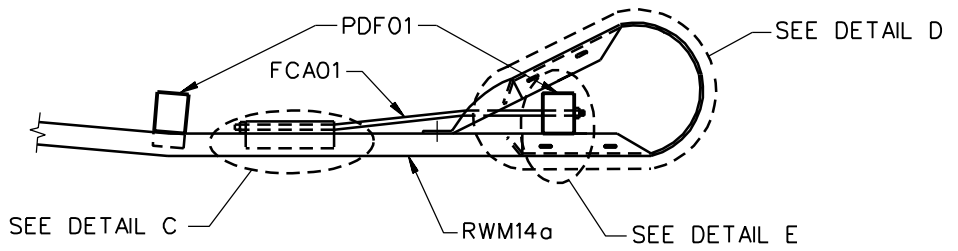
1. THE 1220 FLARE AT THE BCT TERMINAL END IS ESSENTIAL TO PROPER BCT PERFORMANCE.
2. DIMENSIONS SHOWN FOR POST LAYOUT ARE TO THE BLOCKOUT EXCEPT FOR THE FIRST TWO POSTS WHERE NO BLOCKOUTS ARE USED.

1992

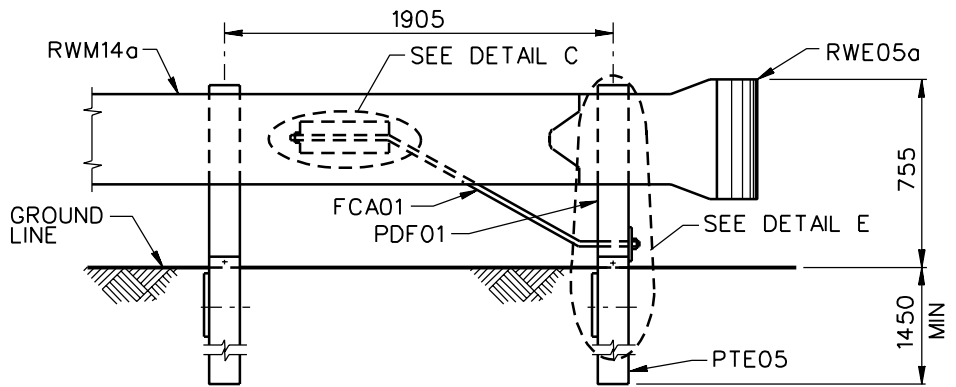
TIMBER-POST BREAKAWAY CABLE TERMINAL

SEW03a-b

SHEET NO.	REF. NO.
1 of 8	



PLAN



ELEVATION

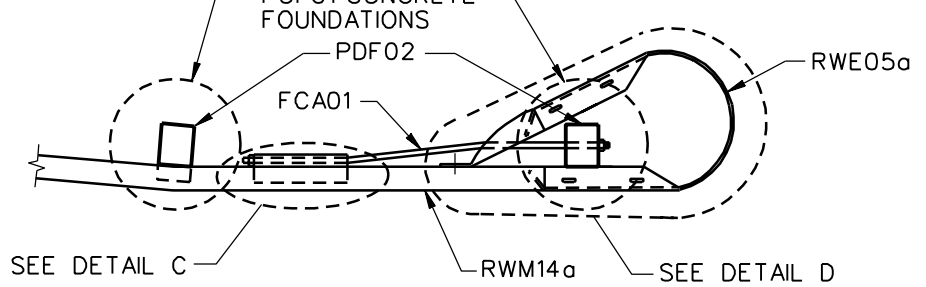
DETAIL A: BUFFERED END & ANCHORAGE-SEW03a

TIMBER-POST BREAKAWAY CABLE TERMINAL

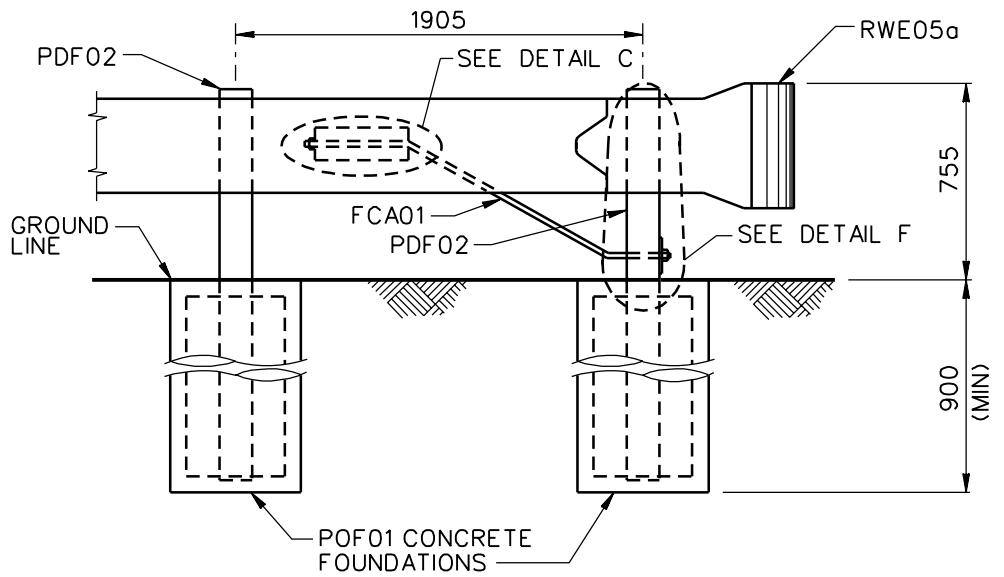
SEW03a-b

SHEET NO.	REF. NO.
-----------	----------

3 of 8



PLAN



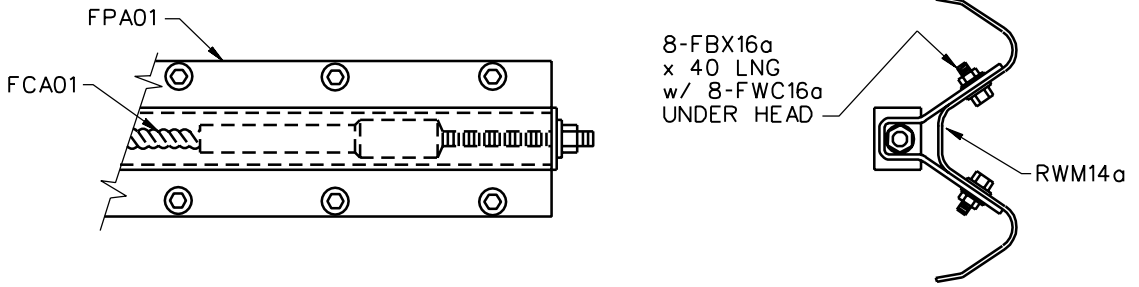
ELEVATION

DETAIL B: BUFFERED END & ANCHORAGE-SEW03b

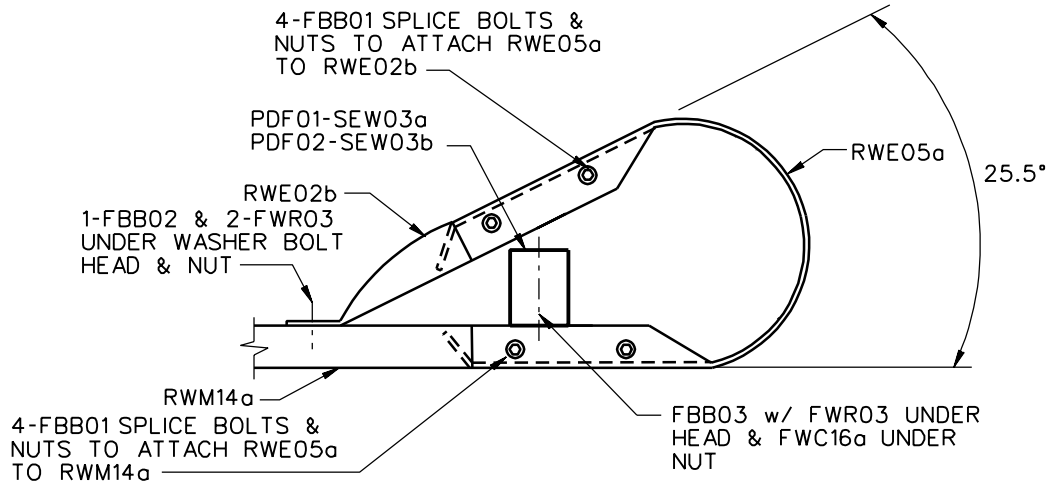
TIMBER-POST BREAKAWAY CABLE TERMINAL

SEW03a-b

SHEET NO.	REF. NO.
5 of 8	

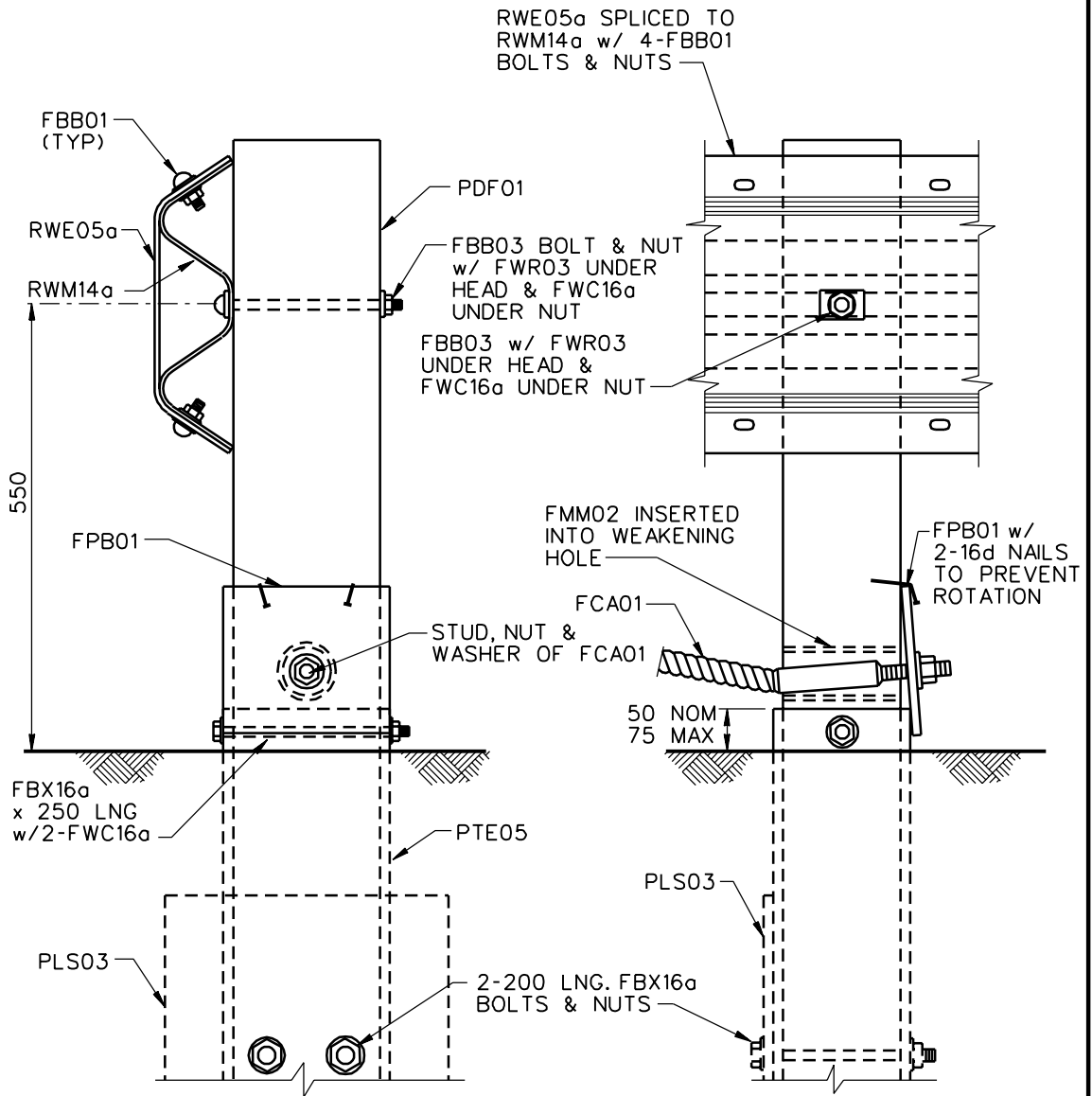


DETAIL C: ANCHOR PLATE ASSEMBLY DETAILS



DETAIL D: END SECTION ASSEMBLY DETAILS

TIMBER-POST BREAKAWAY CABLE TERMINAL	
SEW03a-b	
SHEET NO.	REF. NO.
6 of 8	



DETAIL E: POST 1 ASSEMBLY-SEW03a

TIMBER-POST BREAKAWAY CABLE TERMINAL	
SEW03a-b	
SHEET NO.	REF. NO.
7 of 8	

