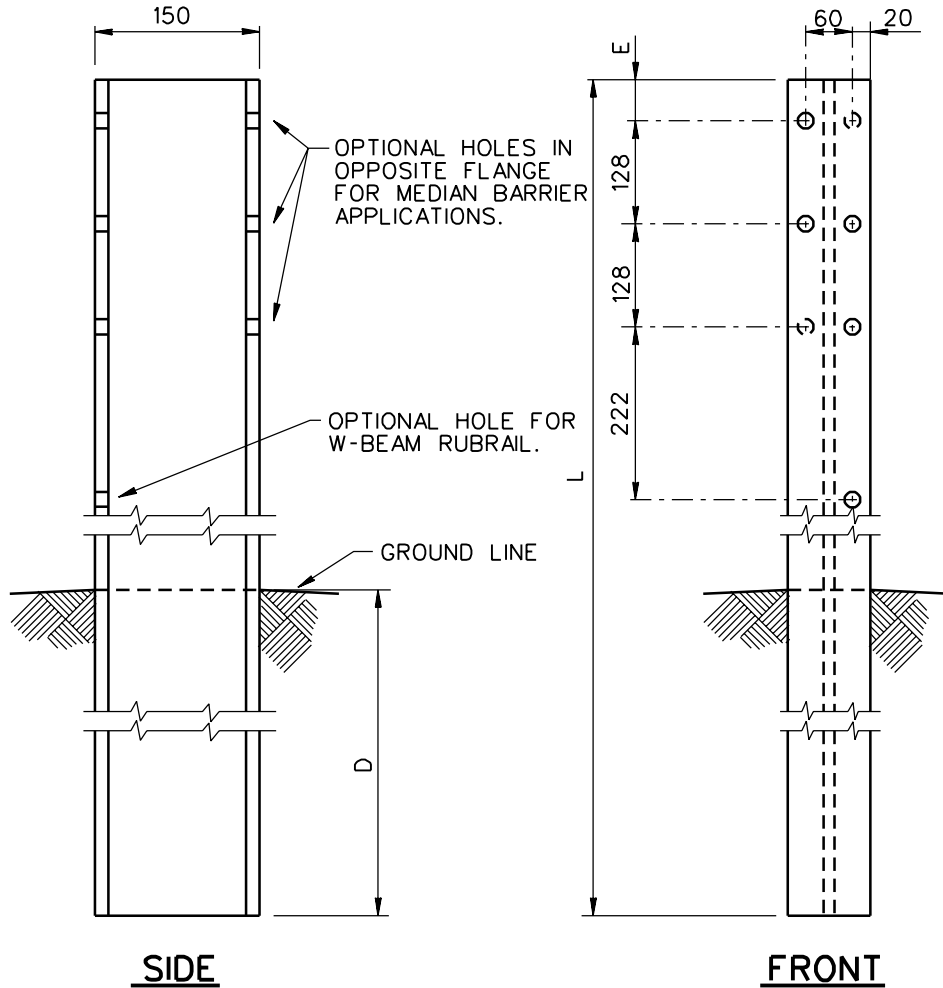
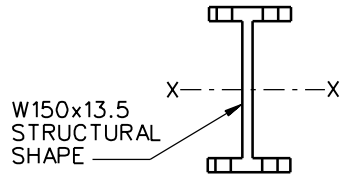


NOTE: ALL HOLES ARE 20 D.

DESIGNATOR	L	D	E
PWE01	1830	1100	52
PWE02	1980	1250	52
PWE03	1980	1153	149
PWE04	2060	1173	149



1994

WIDE-FLANGE GUARDRAIL POST

PWE01-04

SHEET NO.	REF. NO.
1 of 2	P-10-79

SPECIFICATIONS

W-beam and thrie-beam guardrail posts shall be manufactured using AASHTO M270M (ASTM A709M) Grade 250 steel unless corrosion resistant steel is required in which case the post shall be manufactured from AASHTO M270M (ASTM A709M) Grade 50W steel. The dimensions of the cross-section shall conform a W150x13.5 section as defined in AASHTO M160M (ASTM A6M). W150x12.6 wide flange posts are an acceptable alternative that is considered equivalent to the W150x13.5.

After the section is cut and all holes are drilled or punched the component should be zinc-coated according to AASHTO M111 (ASTM A123) unless corrosion resistant steel is used. When corrosion resistant steel is used the portion of the post to be embedded in soil shall be zinc-coated according to AASHTO M111 (ASTM A123) and the portion above the soil shall not be zinc-coated, painted or otherwise treated.

Designator	Area (10 ³ mm ²)	I _x (10 ⁶ mm ⁴)	I _y (10 ⁶ mm ⁴)	S _x (10 ³ mm ⁴)	S _y (10 ³ mm ⁴)
PWE01-04	1.7	6.84	0.91	91.2	18.2

Dimensional tolerances not shown or implied are intended to be those consistent with the proper functioning of the part, including its appearance and accepted manufacturing practices.

INTENDED USE

Posts PWE01 and PWE02 are used with the SGR04a guardrail and SGM04a median barrier. PWB01 blockouts are attached to the post using at least 2 40-mm long FBX16a bolts and nuts. The PWE03 and PWE04 posts are used with the SGR09a-b guardrail and the SGM09a-b median barriers. PWB01, PWB02 or PWB03 blockouts are attached using at least 2 40-mm long bolts for each blockout. Posts PWE01 and PWE02 are also used in the STB02, STB03, and STB04 w-beam guardrail to bridge rail transitions. Posts PWE03 and PWE04 are also used in the STB05 and STB06 thrie-beam guardrail to bridge rail transitions.

WIDE-FLANGE GUARDRAIL POST

PWE01-04

SHEET NO.

DATE

2 of 2

03-23-00

